

Acta Crystallographica Section E

Structure Reports

Online

ISSN 1600-5368

2-Ethoxy-4-[[[(2-nitrophenyl)hydrazono]-methyl]phenol

Zhi-Gang Yin,* Heng-Yu Qian, Chun-Xia Zhang and Xue-Wen Zhu

Key Laboratory of Surface and Interface Science of Henan, School of Materials and Chemical Engineering, Zhengzhou University of Light Industry, Zhengzhou 450002, People's Republic of China

Correspondence e-mail: yinck@263.net

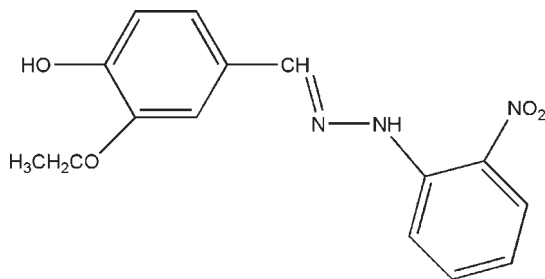
Received 11 September 2009; accepted 12 September 2009

Key indicators: single-crystal X-ray study; $T = 296$ K; mean $\sigma(\text{C}-\text{C}) = 0.003$ Å; R factor = 0.037; wR factor = 0.071; data-to-parameter ratio = 13.7.

The title compound, $\text{C}_{15}\text{H}_{15}\text{N}_3\text{O}_4$, a Schiff base, was obtained from a condensation reaction of 3-ethoxy-4-hydroxybenzaldehyde and 2-nitrophenylhydrazine. The molecule is approximately planar, the largest deviation from the mean plane being 0.1449 (16) Å. An intramolecular $\text{N}-\text{H}\cdots\text{O}$ interaction is also present. In the crystal, intermolecular $\text{O}-\text{H}\cdots\text{O}$ hydrogen bonds link the molecules, forming chain parallel to the b axis.

Related literature

For the role played by Schiff bases in the development of various proteins and enzymes, see: Kahwa *et al.* (1986); Santos *et al.* (2001).



Experimental

Crystal data

 $\text{C}_{15}\text{H}_{15}\text{N}_3\text{O}_4$
 $M_r = 301.30$

 Monoclinic, $P2_1/c$
 $a = 14.586$ (3) Å

 $b = 5.002$ (1) Å
 $c = 19.894$ (4) Å
 $\beta = 102.40$ (3)°
 $V = 1417.6$ (5) Å³
 $Z = 4$

 Mo $K\alpha$ radiation
 $\mu = 0.11$ mm⁻¹
 $T = 296$ K
 $0.20 \times 0.18 \times 0.17$ mm

Data collection

 Bruker SMART CCD area-detector diffractometer
 Absorption correction: multi-scan (SADABS; Bruker, 1998)
 $T_{\min} = 0.979$, $T_{\max} = 0.982$

 5585 measured reflections
 2762 independent reflections
 1264 reflections with $I > 2\sigma(I)$
 $R_{\text{int}} = 0.040$

Refinement

 $R[F^2 > 2\sigma(F^2)] = 0.037$
 $wR(F^2) = 0.071$
 $S = 0.72$
 2762 reflections

 201 parameters
 H-atom parameters constrained
 $\Delta\rho_{\text{max}} = 0.13$ e Å⁻³
 $\Delta\rho_{\text{min}} = -0.20$ e Å⁻³

Table 1

Hydrogen-bond geometry (Å, °).

$D-H\cdots A$	$D-H$	$H\cdots A$	$D\cdots A$	$D-H\cdots A$
$\text{N2}-\text{H2}\cdots\text{O1}$	0.86	1.99	2.610 (2)	128
$\text{O4}-\text{H11}\cdots\text{O4}^i$	0.82	2.21	2.9842 (16)	159

Symmetry code: (i) $-x + 1, y + \frac{1}{2}, -z - \frac{1}{2}$.

Data collection: SMART (Bruker, 1998); cell refinement: SAINT (Bruker, 1998); data reduction: SAINT; program(s) used to solve structure: SHELXS97 (Sheldrick, 2008); program(s) used to refine structure: SHELXL97 (Sheldrick, 2008); molecular graphics: ORTEPIII (Burnett & Johnson, 1996), ORTEP-3 for Windows (Farrugia, 1997) and PLATON (Spek, 2009); software used to prepare material for publication: SHELXL97.

The authors would like to express their deep appreciation to the startup fund for PhDs of the Natural Scientific Research of Zhengzhou University of Light Industry (No. 2005001) and the Fund for Natural Scientific Research of Zhengzhou University of Light Industry (000455).

Supplementary data and figures for this paper are available from the IUCr electronic archives (Reference: DN2485).

References

- Bruker (1998). SMART, SAINT and SADABS. Bruker AXS Inc., Madison, Wisconsin, USA. AXS Inc., Madison, Wisconsin, USA.
 Burnett, M. N. & Johnson, C. K. (1996). ORTEPIII. Report ORNL-6895. Oak Ridge National Laboratory, Oak Ridge, Tennessee, USA.
 Farrugia, L. J. (1997). *J. Appl. Cryst.* **30**, 565.
 Kahwa, I. A., Selbin, I., Hsieh, T. C. Y. & Laine, R. A. (1986). *Inorg. Chim. Acta*, **118**, 179–185.
 Santos, M. L. P., Bagatin, I. A., Pereira, E. M. & Ferreira, A. M. D. C. (2001). *J. Chem. Soc. Dalton Trans.* pp. 838–844.
 Sheldrick, G. M. (2008). *Acta Cryst.* **A64**, 112–122.
 Spek, A. L. (2009). *Acta Cryst.* **D65**, 148–155.

supplementary materials

Acta Cryst. (2009). E65, o2575 [doi:10.1107/S160053680903699X]

2-Ethoxy-4-[[2-(nitrophenyl)hydrazono]methyl]phenol

Z.-G. Yin, H.-Y. Qian, C.-X. Zhang and X.-W. Zhu

Comment

The chemistry of Schiff base has attracted a great deal of interest in recent years. These compounds play an important role in the development of various proteins and enzymes (Kahwa *et al.*, 1986; Santos *et al.*, 2001). As part of our interest in the study of the coordination chemistry of Schiff bases, we synthesized the title compound and determined its crystal structure.

The whole molecule is roughly planar with the largest deviation from the mean plane being $-0.1449(16)\text{\AA}$ at C15 (Fig. 1).

Intermolecular O—H \cdots O hydrogen bonds link the molecule to form chain parallel to the b axis (Table 1, Fig. 2).

Experimental

2-Nitrophenylhydrazine (1 mmol, 0.153 g) was dissolved in anhydrous ethanol (15 ml), The mixture was stirred for several minutes at 351k, 3-Ethoxy-4-hydroxybenzaldehyde (1 mmol, 0.166 g) in ethanol (8 mm l) was added dropwise and the mixture was stirred at refluxing temperature for 2 h. The product was isolated and recrystallized from methanol, red single crystals of (I) was obtained after 3 d.

Refinement

All H atoms were positioned geometrically and refined as riding with C—H=0.93 (aromatic), 0.97(methylene), 0.96 Å(methyl) and N—H=0.86 Å, with $U_{\text{iso}}(\text{H})=1.2U_{\text{eq}}(\text{CH, CH}_2 \text{ or NH})$ and $U_{\text{iso}}(\text{H})=1.5U_{\text{eq}}(\text{C})$.

Figures

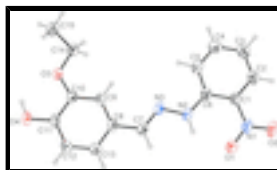


Fig. 1. Molecular view of of (I) with the atom labeling scheme. Displacement ellipsoids are drawn at the 30% probability level. H atoms are represented as small spheres of arbitrary radii.

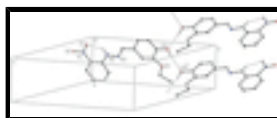


Fig. 2. Partial packing view of (I) showing the formation of a chain through O—H \cdots O hydrogen bonds. H atoms are represented as small spheres of arbitrary radii and H bonds are shown as dashed line. H atoms not involved in hydrogen bonding have been omitted for clarity. [Symmetry codes: (i) $-x+1, y+1/2, -z-1/2$]

2-ethoxy-4-[[2-(nitrophenyl)hydrazono]methyl]phenol

Crystal data

$\text{C}_{15}\text{H}_{15}\text{N}_3\text{O}_4$

$F_{000} = 632$

supplementary materials

$M_r = 301.30$	$D_x = 1.412 \text{ Mg m}^{-3}$
Monoclinic, $P2_1/c$	Mo $K\alpha$ radiation, $\lambda = 0.71073 \text{ \AA}$
Hall symbol: -P 2ybc	Cell parameters from 1993 reflections
$a = 14.586 (3) \text{ \AA}$	$\theta = 3.1\text{--}28.2^\circ$
$b = 5.0020 (10) \text{ \AA}$	$\mu = 0.11 \text{ mm}^{-1}$
$c = 19.894 (4) \text{ \AA}$	$T = 296 \text{ K}$
$\beta = 102.40 (3)^\circ$	Block, red
$V = 1417.6 (5) \text{ \AA}^3$	$0.20 \times 0.18 \times 0.17 \text{ mm}$
$Z = 4$	

Data collection

Bruker SMART CCD area-detector diffractometer	2762 independent reflections
Radiation source: fine-focus sealed tube	1264 reflections with $I > 2\sigma(I)$
Monochromator: graphite	$R_{\text{int}} = 0.040$
$T = 296 \text{ K}$	$\theta_{\text{max}} = 26.0^\circ$
ω scans	$\theta_{\text{min}} = 3.2^\circ$
Absorption correction: multi-scan (SADABS; Bruker, 1998)	$h = -17 \rightarrow 16$
$T_{\text{min}} = 0.979$, $T_{\text{max}} = 0.982$	$k = -6 \rightarrow 5$
5585 measured reflections	$l = -17 \rightarrow 24$

Refinement

Refinement on F^2	Secondary atom site location: difference Fourier map
Least-squares matrix: full	Hydrogen site location: inferred from neighbouring sites
$R[F^2 > 2\sigma(F^2)] = 0.037$	H-atom parameters constrained
$wR(F^2) = 0.071$	$w = 1/[\sigma^2(F_o^2) + (0.0305P)^2]$
$S = 0.72$	where $P = (F_o^2 + 2F_c^2)/3$
2762 reflections	$(\Delta/\sigma)_{\text{max}} < 0.001$
201 parameters	$\Delta\rho_{\text{max}} = 0.13 \text{ e \AA}^{-3}$
Primary atom site location: structure-invariant direct methods	$\Delta\rho_{\text{min}} = -0.20 \text{ e \AA}^{-3}$
	Extinction correction: none

Special details

Geometry. All esds (except the esd in the dihedral angle between two l.s. planes) are estimated using the full covariance matrix. The cell esds are taken into account individually in the estimation of esds in distances, angles and torsion angles; correlations between esds in cell parameters are only used when they are defined by crystal symmetry. An approximate (isotropic) treatment of cell esds is used for estimating esds involving l.s. planes.

Refinement. Refinement of F^2 against ALL reflections. The weighted R -factor wR and goodness of fit S are based on F^2 , conventional R -factors R are based on F , with F set to zero for negative F^2 . The threshold expression of $F^2 > \sigma(F^2)$ is used only for calculating R -

factors(gt) etc. and is not relevant to the choice of reflections for refinement. R -factors based on F^2 are statistically about twice as large as those based on F , and R - factors based on ALL data will be even larger.

Fractional atomic coordinates and isotropic or equivalent isotropic displacement parameters (\AA^2)

	x	y	z	$U_{\text{iso}}^*/U_{\text{eq}}$
C1	0.06946 (14)	0.4950 (3)	0.12464 (9)	0.0311 (5)
C2	0.07330 (15)	0.6553 (4)	0.18267 (10)	0.0385 (5)
H2A	0.0301	0.6290	0.2103	0.046*
C3	0.13985 (16)	0.8501 (4)	0.19918 (10)	0.0435 (6)
H3	0.1428	0.9562	0.2380	0.052*
C4	0.20308 (15)	0.8864 (4)	0.15677 (10)	0.0431 (6)
H4	0.2483	1.0197	0.1674	0.052*
C5	0.20040 (15)	0.7316 (4)	0.10010 (10)	0.0404 (6)
H5	0.2439	0.7620	0.0729	0.049*
C6	0.13368 (14)	0.5272 (3)	0.08161 (10)	0.0309 (5)
C7	0.19806 (14)	0.2628 (4)	-0.06428 (9)	0.0350 (5)
H7	0.1510	0.1341	-0.0737	0.042*
C8	0.26434 (14)	0.2814 (3)	-0.10903 (9)	0.0320 (5)
C9	0.33800 (14)	0.4669 (3)	-0.09704 (9)	0.0320 (5)
H9	0.3455	0.5822	-0.0596	0.038*
C10	0.39910 (14)	0.4781 (3)	-0.14074 (10)	0.0315 (5)
C11	0.38746 (14)	0.3060 (4)	-0.19732 (9)	0.0310 (5)
C12	0.31578 (15)	0.1243 (4)	-0.20896 (10)	0.0369 (5)
H12	0.3082	0.0102	-0.2467	0.044*
C13	0.25466 (15)	0.1098 (4)	-0.16481 (10)	0.0375 (5)
H13	0.2066	-0.0161	-0.1726	0.045*
C14	0.49775 (15)	0.8147 (4)	-0.07617 (10)	0.0397 (5)
H14A	0.5067	0.7107	-0.0341	0.048*
H14B	0.4476	0.9422	-0.0764	0.048*
C15	0.58674 (16)	0.9580 (4)	-0.08049 (11)	0.0557 (7)
H15A	0.6358	0.8298	-0.0802	0.084*
H15B	0.6044	1.0757	-0.0417	0.084*
H15C	0.5769	1.0602	-0.1223	0.084*
N1	-0.00228 (12)	0.2929 (3)	0.11143 (9)	0.0380 (4)
N2	0.13414 (11)	0.3742 (3)	0.02520 (8)	0.0365 (4)
H2	0.0924	0.2519	0.0131	0.044*
N3	0.20184 (11)	0.4161 (3)	-0.01266 (8)	0.0345 (4)
O1	-0.00973 (10)	0.1463 (3)	0.06016 (7)	0.0466 (4)
O2	-0.05468 (11)	0.2664 (3)	0.15192 (7)	0.0572 (5)
O3	0.47481 (10)	0.6437 (2)	-0.13471 (7)	0.0433 (4)
O4	0.44797 (11)	0.3159 (2)	-0.24127 (7)	0.0462 (4)
H11	0.4789	0.4540	-0.2346	0.069*

Atomic displacement parameters (\AA^2)

	U^{11}	U^{22}	U^{33}	U^{12}	U^{13}	U^{23}
C1	0.0301 (13)	0.0326 (11)	0.0327 (12)	-0.0013 (10)	0.0117 (10)	0.0023 (9)

supplementary materials

C2	0.0433 (15)	0.0418 (12)	0.0346 (12)	0.0052 (12)	0.0179 (11)	0.0040 (10)
C3	0.0542 (16)	0.0416 (13)	0.0356 (13)	0.0044 (12)	0.0119 (12)	-0.0022 (10)
C4	0.0453 (16)	0.0383 (12)	0.0458 (14)	-0.0061 (11)	0.0099 (12)	-0.0029 (11)
C5	0.0400 (15)	0.0406 (12)	0.0456 (14)	-0.0100 (11)	0.0201 (12)	0.0002 (10)
C6	0.0321 (13)	0.0320 (11)	0.0296 (12)	0.0000 (10)	0.0090 (10)	0.0023 (9)
C7	0.0316 (13)	0.0389 (11)	0.0371 (12)	-0.0088 (10)	0.0131 (11)	-0.0003 (10)
C8	0.0311 (13)	0.0342 (11)	0.0343 (12)	-0.0021 (10)	0.0151 (10)	-0.0006 (10)
C9	0.0372 (14)	0.0326 (11)	0.0306 (12)	-0.0039 (10)	0.0173 (11)	-0.0038 (9)
C10	0.0332 (13)	0.0286 (11)	0.0363 (12)	-0.0039 (10)	0.0156 (10)	-0.0011 (9)
C11	0.0349 (13)	0.0348 (12)	0.0276 (11)	0.0034 (10)	0.0163 (10)	0.0018 (9)
C12	0.0450 (14)	0.0373 (12)	0.0305 (12)	-0.0057 (11)	0.0128 (11)	-0.0082 (9)
C13	0.0382 (14)	0.0388 (12)	0.0378 (13)	-0.0110 (10)	0.0132 (11)	-0.0044 (10)
C14	0.0448 (14)	0.0419 (11)	0.0345 (12)	-0.0099 (11)	0.0134 (11)	-0.0002 (10)
C15	0.0494 (16)	0.0683 (15)	0.0527 (15)	-0.0233 (13)	0.0186 (13)	-0.0084 (12)
N1	0.0358 (12)	0.0444 (10)	0.0388 (10)	-0.0033 (9)	0.0187 (9)	0.0033 (9)
N2	0.0353 (11)	0.0403 (9)	0.0398 (11)	-0.0130 (8)	0.0213 (9)	-0.0045 (8)
N3	0.0310 (11)	0.0416 (10)	0.0355 (10)	-0.0039 (8)	0.0173 (9)	0.0014 (8)
O1	0.0463 (10)	0.0544 (9)	0.0444 (10)	-0.0174 (8)	0.0215 (8)	-0.0101 (7)
O2	0.0517 (11)	0.0749 (10)	0.0563 (10)	-0.0173 (9)	0.0363 (9)	-0.0046 (8)
O3	0.0441 (9)	0.0484 (8)	0.0459 (9)	-0.0189 (8)	0.0284 (8)	-0.0145 (7)
O4	0.0547 (11)	0.0470 (9)	0.0472 (9)	-0.0078 (8)	0.0339 (8)	-0.0069 (7)

Geometric parameters (Å, °)

C1—C2	1.397 (2)	C10—O3	1.365 (2)
C1—C6	1.407 (3)	C10—C11	1.398 (2)
C1—N1	1.438 (2)	C11—C12	1.367 (2)
C2—C3	1.365 (3)	C11—O4	1.370 (2)
C2—H2A	0.9300	C12—C13	1.381 (3)
C3—C4	1.389 (3)	C12—H12	0.9300
C3—H3	0.9300	C13—H13	0.9300
C4—C5	1.361 (2)	C14—O3	1.426 (2)
C4—H4	0.9300	C14—C15	1.501 (3)
C5—C6	1.405 (2)	C14—H14A	0.9700
C5—H5	0.9300	C14—H14B	0.9700
C6—N2	1.359 (2)	C15—H15A	0.9600
C7—N3	1.273 (2)	C15—H15B	0.9600
C7—C8	1.451 (3)	C15—H15C	0.9600
C7—H7	0.9300	N1—O2	1.2308 (19)
C8—C13	1.386 (2)	N1—O1	1.2417 (18)
C8—C9	1.401 (2)	N2—N3	1.380 (2)
C9—C10	1.373 (3)	N2—H2	0.8600
C9—H9	0.9300	O4—H11	0.8200
C2—C1—C6	121.55 (18)	C12—C11—O4	119.34 (17)
C2—C1—N1	116.94 (18)	C12—C11—C10	120.12 (17)
C6—C1—N1	121.50 (17)	O4—C11—C10	120.54 (18)
C3—C2—C1	120.59 (19)	C11—C12—C13	120.11 (18)
C3—C2—H2A	119.7	C11—C12—H12	119.9
C1—C2—H2A	119.7	C13—C12—H12	119.9

C2—C3—C4	118.55 (19)	C12—C13—C8	120.53 (19)
C2—C3—H3	120.7	C12—C13—H13	119.7
C4—C3—H3	120.7	C8—C13—H13	119.7
C5—C4—C3	121.6 (2)	O3—C14—C15	107.09 (16)
C5—C4—H4	119.2	O3—C14—H14A	110.3
C3—C4—H4	119.2	C15—C14—H14A	110.3
C4—C5—C6	121.73 (19)	O3—C14—H14B	110.3
C4—C5—H5	119.1	C15—C14—H14B	110.3
C6—C5—H5	119.1	H14A—C14—H14B	108.6
N2—C6—C5	119.98 (17)	C14—C15—H15A	109.5
N2—C6—C1	124.03 (18)	C14—C15—H15B	109.5
C5—C6—C1	115.98 (17)	H15A—C15—H15B	109.5
N3—C7—C8	122.48 (18)	C14—C15—H15C	109.5
N3—C7—H7	118.8	H15A—C15—H15C	109.5
C8—C7—H7	118.8	H15B—C15—H15C	109.5
C13—C8—C9	119.29 (18)	O2—N1—O1	121.13 (17)
C13—C8—C7	118.99 (18)	O2—N1—C1	119.06 (16)
C9—C8—C7	121.72 (17)	O1—N1—C1	119.80 (16)
C10—C9—C8	119.83 (17)	C6—N2—N3	119.74 (16)
C10—C9—H9	120.1	C6—N2—H2	120.1
C8—C9—H9	120.1	N3—N2—H2	120.1
O3—C10—C9	126.29 (18)	C7—N3—N2	115.88 (16)
O3—C10—C11	113.60 (16)	C10—O3—C14	118.65 (14)
C9—C10—C11	120.11 (19)	C11—O4—H11	109.5

Hydrogen-bond geometry (Å, °)

<i>D</i> —H \cdots <i>A</i>	<i>D</i> —H	H \cdots <i>A</i>	<i>D</i> \cdots <i>A</i>	<i>D</i> —H \cdots <i>A</i>
N2—H2 \cdots O1	0.86	1.99	2.610 (2)	128
O4—H11 \cdots O4 ⁱ	0.82	2.21	2.9842 (16)	159

Symmetry codes: (i) $-x+1, y+1/2, -z-1/2$.

Fig. 1

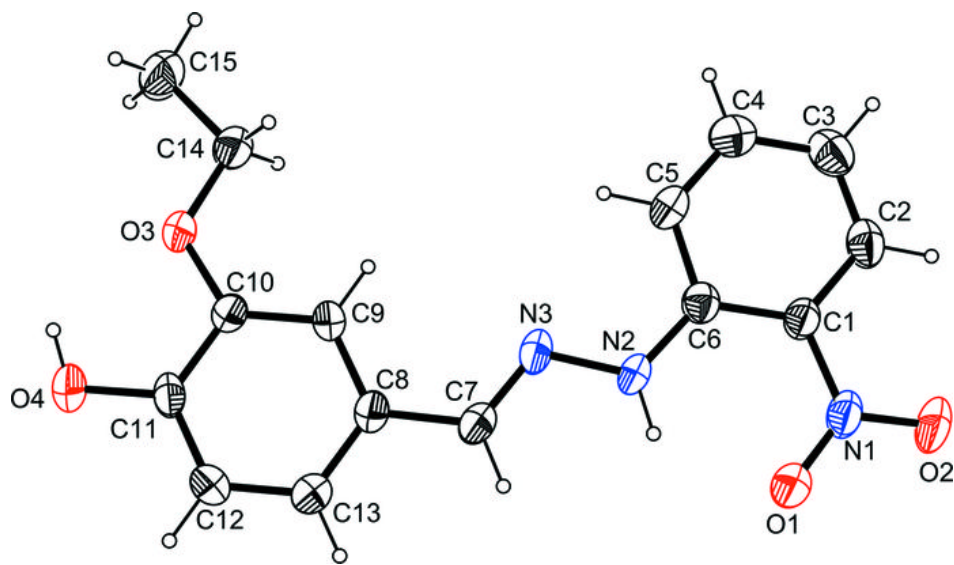


Fig. 2

